

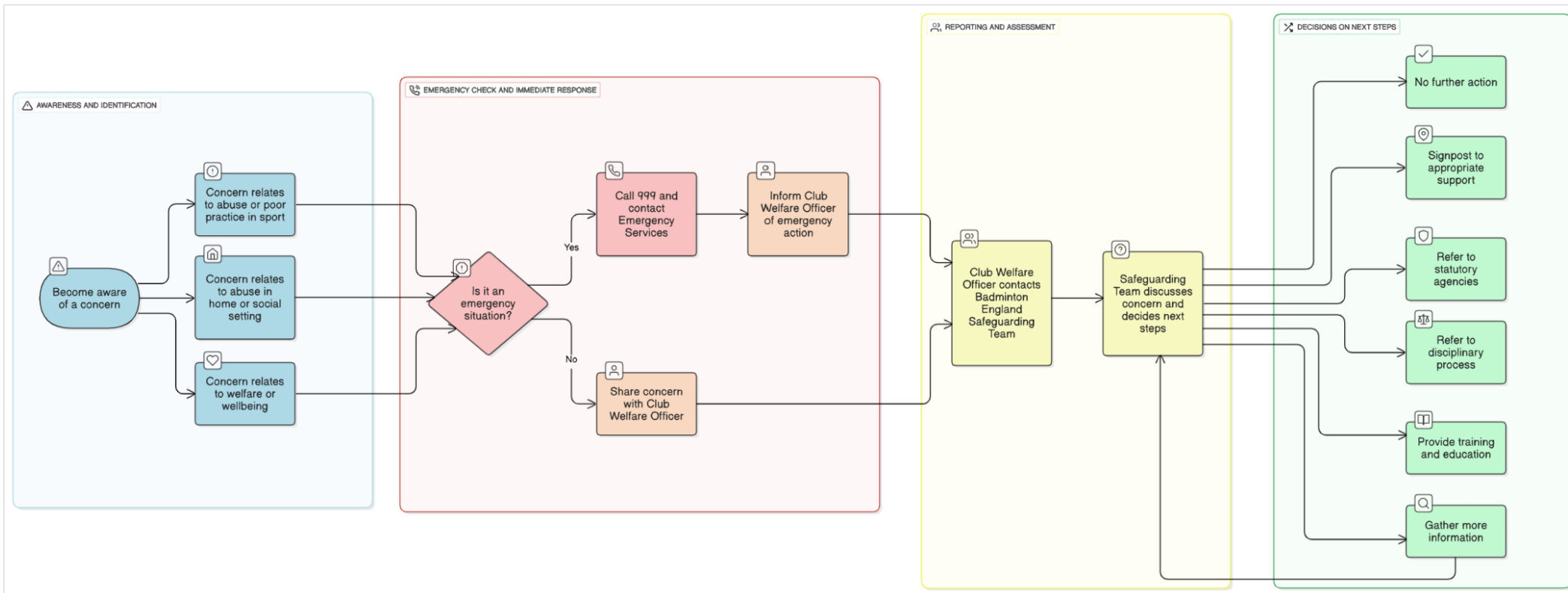
Badminton England – Sharing Concerns Flowchart

Badminton England are here to support you to create safe, welcoming and inclusive environments for all those playing, working, and volunteering in our sport.

We are a Sport that Cares about everyone, and this guidance has been developed to incorporate concerns relating to both adults and children.

If you have any queries please contact safeguarding@badmintonengland.co.uk

Sharing Concerns Flowchart



Contact Details for Club Welfare Officer can be added here :

NAME Terry Summers
CONTACT NUMBER 07876 176512
CONTACT EMAIL t.jsummers@btinternet.com

In an emergency contact 999 for Police and/or Ambulance

NSPCC: 24-hour helpline : 0808 800 5000
ACT : Safeguarding adults advice helpline : 0115 951 5400
Multi-Agency Safeguarding Hubs (MASH) 01708 433222
Children's Social Care 01708 433222
Adult Social Care 01708 432000
In emergency or out of hours 01708 433999

Contact the Badminton England Safeguarding Team:

safeguarding@badmintonengland.co.uk

Safeguarding Manager - Victoria Brown: 0773 889 0309

Safeguarding Case Officer - Angela Toon: 0790 100 5320